

# BOROUGH OF WHITEHAVEN

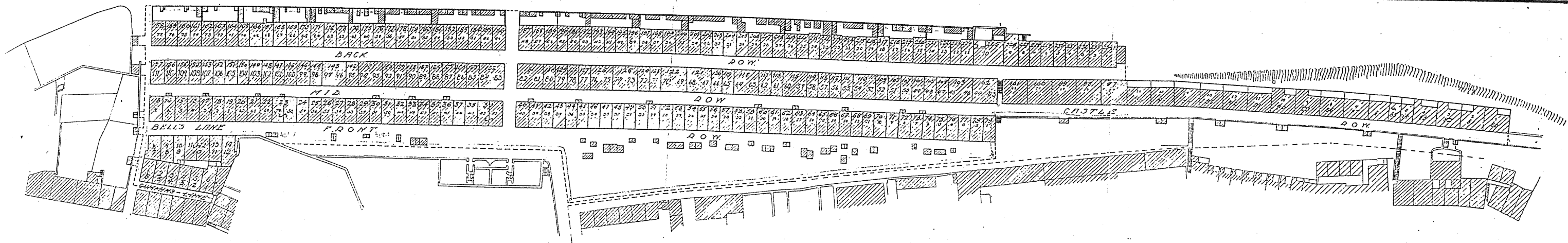
## CLEARANCE AREA N° 23

**PLANS OF "NEW HOUSES" WHITEHAVEN**

Around 1788 work was commenced on the building of some 266 miners dwellings in the "Ginns" area of Whitehaven.

By 1849 when Robert Rawlinson published his report on the water supply and sanitary condition of the town "New Houses" were unbelievably squalid. Various improvements were effected, but the long rows of tenements were not demolished until 1947.

These plans of "New Houses" were drawn up in 1935.

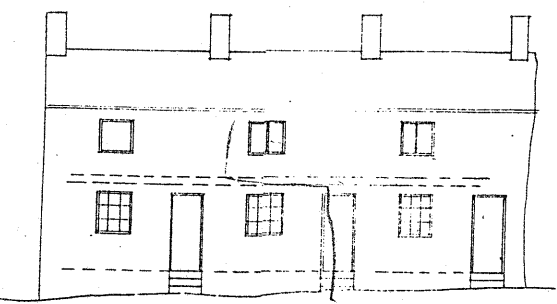


NEWHOUSES CLEARANCE AREA N° 23  
SCALE 1/500

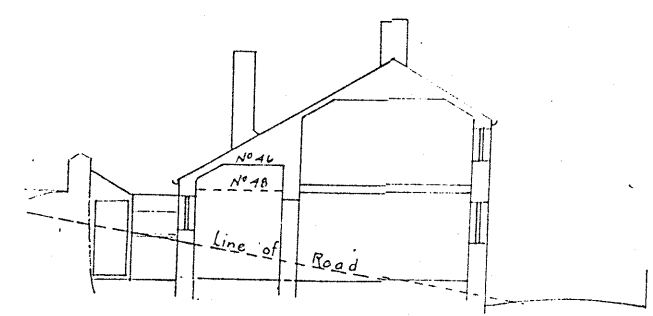
BOROUGH ENGINEER & SURVEYORS OFFICE  
TOWN HALL, WHITEHAVEN

### BACK ROW ~ NEWHOUSES

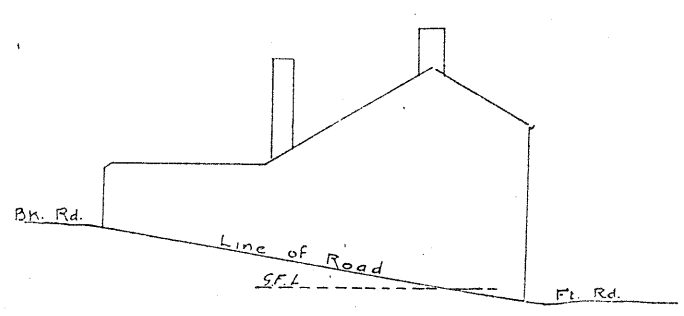
Plan as Existing



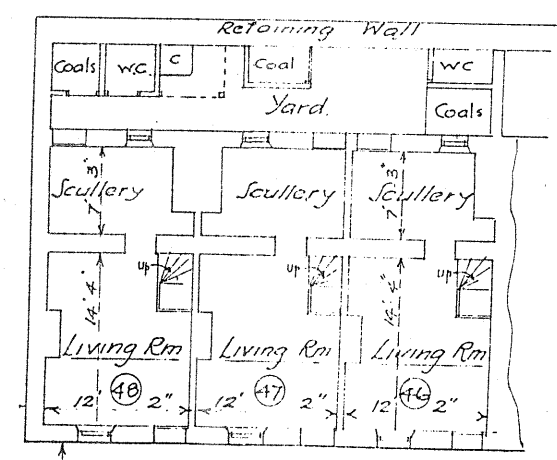
FRONT ELEVATION



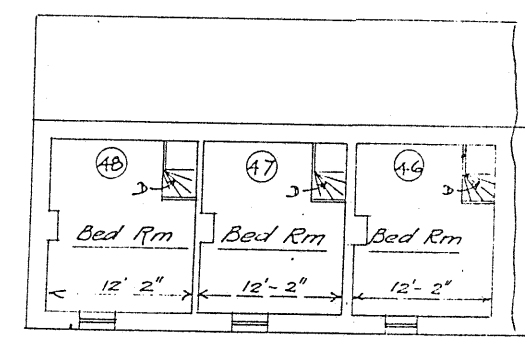
SECTION A.A



END ELEVATION



GROUND FLOOR PLAN



FIRST FLOOR PLAN