

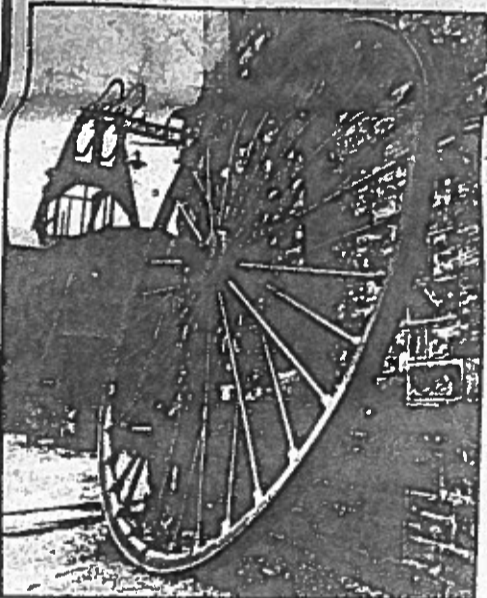
# DEAD Town comes



## THEY CALLED THIS "NEW HOUSES"

For every eight of these so-called houses—now to be demolished—there is one lavatory (opposite the front windows) and one tap. Re-housing is not so universally welcome as you would suppose. It means 7s. 6d. rent instead of 5s. 6d.—2s. less to spend on the kids' food.

**E**XPERTS called Whitehaven the worst-hit town in Britain from the point of view of population. We had practically nothing. About 60 per cent. of the working population was unemployed . . . that was how Mayor Fred Borland summed up Whitehaven's position in the spring of this year. Then in March came the news that the collieries, mainstay of Whitehaven employment, were to be re-opened. They had been closed for 18 months. In addition, a scheme for reconditioning Whitehaven's harbour, so as to enable Whitehaven coal to compete in Continental and Mediterranean markets, has been revived. Whitehaven to-day is a different town from what it was six months ago. An important part in starting Whitehaven going once more has been played by the £2,000,000 Nuffield Trust. . . . Apart from unemployment, living conditions in many parts of the town are deplorable, call loudly for improvement. Whitehaven and the whole stricken area are doing all they can to help themselves. One of the difficulties is that the rent for a hovel is 5s. 6d. a week; for a decent, well-built house it is 7s. 6d.—and that means 2s. a week less for food—two-thirds of the Government's whole allowance for one child.



## NOW IT WILL TURN AGAIN

A wheel for the pit-head winding-gear. For 18 months Whitehaven's coal-mines stood idle. By the end of the year 1,000 men will be at work.



## "TIMES HAVE BEEN HARD"

Right is Fred Borland, Whitehaven's mayor. He raised £500 to find boots and clogs for men going back to work—most of them with no proper footwear.



## THESE GIRLS ARE "SCREENERS"

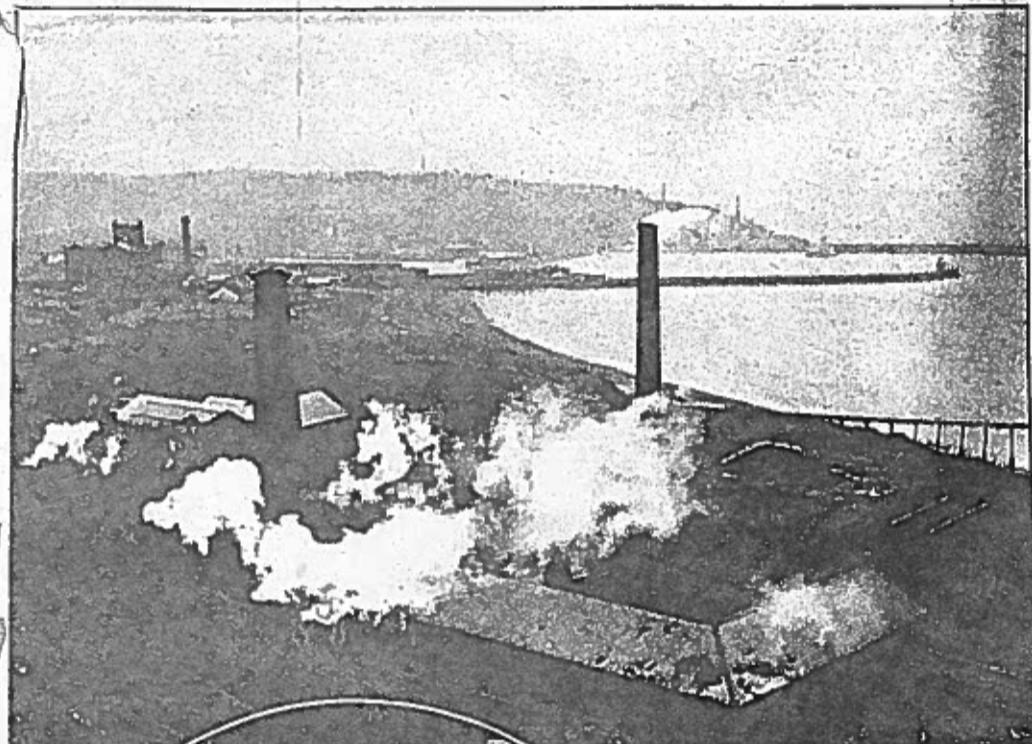
Women work in Whitehaven. They sort pieces of coal as it goes past them on a moving belt, get 25s. to 30s. a week for doing it. Work is given mainly to widows, and wives of unemployed—not to wives of men working in that pit.

# to LIFE

## —AND BACK TO WORK



"It was the best news we've had for years."



## WHITEHAVEN

In foreground the Whitehaven pit. Across the harbour—now to be re-conditioned—are the Haig and Alexandra pits. Workings of these mines run for miles under the sea. They are the tombs of many miners who lost their lives in one or other of the pit disasters.

## NO LONGER ELIGIBLE . . .

Many of the men who were in the Unemployed Club three months ago are now at work again. Opening of the mines affects everyone—harbour-workers, traders, all kinds of small businesses in neighbourhood. Below, drilling in Whitehaven's ironstone mines 1,000 ft. underground.

